

Compact and functional design



Kraus & Naimer stainless steel enclosures

With the switch and distribution-board enclosures made of brushed stainless steel AISI 304 and protection class IP 66, Kraus & Naimer expands its portfolio for applications in particularly harsh environments.

The enclosures are ideal for use in the chemical industry, food production or construction industry, as technical components in such industries are exposed to extremely harsh conditions such as dust, varnishes and solvents. The enclosures also have to adhere to very high hygiene standards.

The compact design and the protection class IP66 are what makes these stainless steel enclosures

particularly suitable for an easy installation in tight spaces and under adverse environmental influences. The enclosure cover is tightened and sealed with silicone. The holes in the cover have a diameter of 22.5 mm, thus providing a standardized installation.

Switch enclosures as well as distribution-board enclosures are available in various designs. Suitable mounting accessories ensure a quick and cost-saving installation. All enclosures comply with the EN 60529 and EN 62262 standards "Degrees of protection provided by enclosures for electrical equipment against external mechanical impacts".

AVAILABLE DESIGNS

APH – Stainless steel enclosure

**Stainless steel enclosure with installation holes in the cover Ø 22.5 mm**

Stainless steel enclosures IP66, type AISI 304, brushed surface/finish, including silicone sealing and cover screws (hexagon and round head slotted screws).

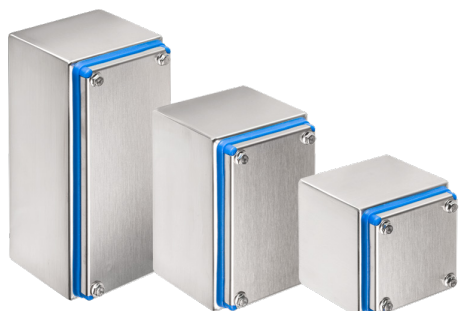
The cover includes installation holes with a diameter of 22,5 mm and an anti-rotation element for standard commercial front-mounting devices.

The enclosure is mounted with rear M5 socket/connector or mounting bracket from the accessories (see below).

Stainless steel distribution-board enclosures

Name	Art. no.	Description
AT2.APH.9.9	5500031	WxHxD 90 x 90 x 90, 1 Installation hole
AT2.APH.9.14	5500032	WxHxD 90 x 140 x 90, 2 Installation holes
AT2.APH.9.20	5500041	WxHxD 90 x 200 x 90, 3 Installation holes
AT2.APH.9.28	5500055	WxHxD 90 x 280 x 90, 4 Installation holes
AT2.APH.16.16	5500056	WxHxD 160 x 160 x 100, 2 x 2 Installation holes
AT2.APH.16.25	5500057	WxHxD 160 x 250 x 100, 4 x 2 Installation holes
AT2.APH.20.20	5500058	WxHxD 200 x 200 x 100, 3 x 2 Installation holes

ADH – Stainless steel distribution-board enclosures

**Stainless steel distribution-board enclosure without installation holes, optionally with a separate mounting plate**

Stainless steel enclosures IP66, type AISI 304, brushed surface/finish, including silicone sealing and cover screws (hexagon and round head slotted screws).

The cover is undrilled. A galvanized steel bottom mounting plate is included with enclosures having a width of 160 mm or more.

The enclosure is mounted with rear M5 socket/connector or mounting bracket from the accessories (see below).

Stainless steel distribution-board enclosures

Name	Art. no.	Description
AT2.ADH.9.9	5500042	WxHxD 90 x 90 x 90, without installation holes
AT2.ADH.9.14	5500043	WxHxD 90 x 140 x 90, without installation holes
AT2.ADH.9.20	5500044	WxHxD 90 x 200 x 90, without installation holes
AT2.ADH.9.28	5500051	WxHxD 90 x 280 x 90, without installation holes
AT2.ADH.16.16	5500052	WxHxD 160 x 160 x 100, without installation holes
AT2.ADH.16.25	5500053	WxHxD 160 x 250 x 100, without installation holes
AT2.ADH.20.20	5500054	WxHxD 200 x 200 x 100, without installation holes

Mounting accessories



Standard



Flat

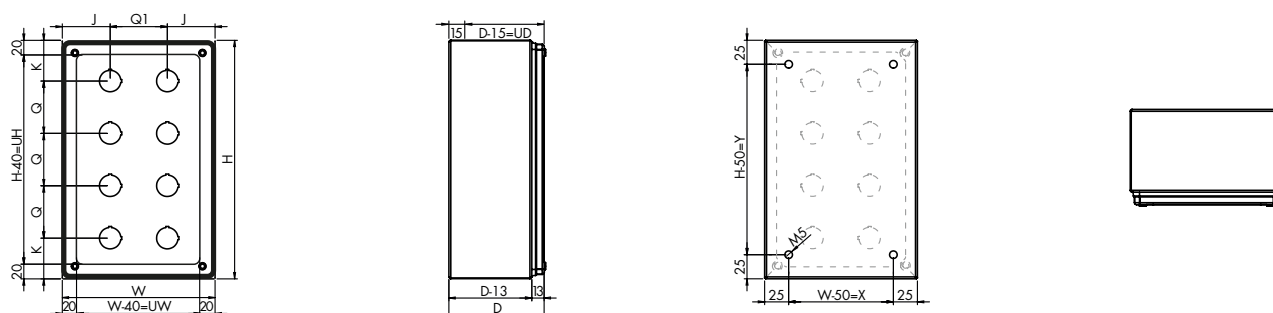


Hygienic

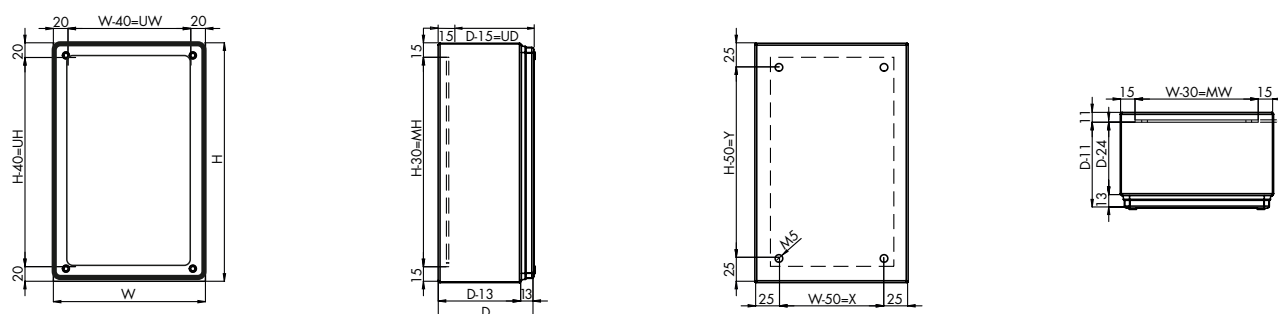
Depending on the respective requirements, different mounting variations are available.

Wall mounting bracket stainless steel Standard, Flat and Hygienic from AISI 304, brushed surface/finish. M5 screws included in the scope of delivery, mounting screws must be provided by the customer.

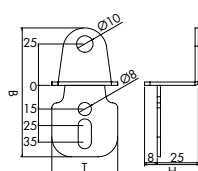
Name	Art. no.	Description
Q4SV.002/2.1KN	5000005	Wall mounting bracket standard, KG10 – KG64. Set of 2 pieces
Q4SV.002/4.1KN	5514561	Wall mounting bracket standard, KG80 – KG100. Set of 4 pieces
Q4SV.001/4.1KN	5514370	Wall mounting bracket standard, KG125 – KG315. Set of 4 pieces
Q4SV.009/2.1KN	5000004	Wall mounting bracket flat, KG10 – KG64. Set of 2 pieces
Q4SV.009/4.1KN	5514560	Wall mounting bracket flat, KG80 – KG100. Set of 4 pieces
Q4SV.195/2.1KN	5514562	Wall spacer hygienic, KG80 – KG100. Set of 2 pieces
Q4SV.199/4.1KN	5514557	Wall spacer hygienic, KG125 – KG315. Set of 4 pieces



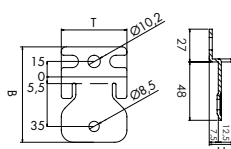
Name	Art. no.	Outside dimensions			Spacing for mounting		Usable space of cover		Useful depth	Installation holes		
		W	H	D	X	Y	UW	UH	UD	J	Q/Q1	K
AT2.APH.9.9	5500031	90	90	90	-	60	50	50	75	45	-	45
AT2.APH.9.14	5500032	90	140	90	-	110	50	100	75	45	55	42.5
AT2.APH.9.20	5500041	90	200	90	-	170	50	160	75	45	55	42.5
AT2.APH.9.28	5500055	90	280	90	-	250	50	240	75	45	60	50
AT2.APH.16.16	5500056	160	160	100	110	110	120	120	85	50	60	50
AT2.APH.16.25	5500057	160	250	100	110	200	120	210	85	50	60	35
AT2.APH.20.20	5500058	200	200	100	150	150	160	160	85	70	60	40



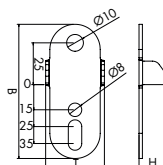
Name	Art. no.	Outside dimensions			Spacing for mounting		Usable space of cover		Useful depth	Mounting plate	
		W	H	D	X	Y	UW	UH	UD	MW	MH
AT2.ADH.9.9	5500042	90	90	90	-	60	50	50	75	-	-
AT2.ADH.9.14	5500043	90	140	90	-	110	50	100	75	-	-
AT2.ADH.9.20	5500044	90	200	90	-	170	50	160	75	-	-
AT2.ADH.9.28	5500051	90	280	90	-	250	50	240	75	-	-
AT2.ADH.16.16	5500052	160	160	100	110	110	120	120	85	130	130
AT2.ADH.16.25	5500053	160	250	100	110	200	120	210	85	130	220
AT2.ADH.20.20	5500054	200	200	100	150	150	160	160	85	170	170



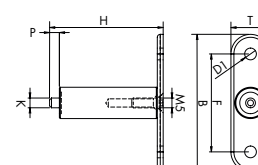
Wall mounting bracket
Standard KG10 – KG100



Wall mounting bracket
Standard from KG125



Wall mounting bracket
Flat



Wall spacer
Hygienic

Design		Dimensions						
		B	H	T	F	P	D1	K
Standard	KG10 – KG100	78	32	40	–	–	–	–
	KG125 – KG315	78,5	20	54	–	–	–	–
Flat	KG10 – KG100	80	16	35	–	–	–	–
	KG125 – KG315	80	16	35	–	–	–	–
Hygienic	KG10 – KG100*	70	58	20	50	5	6	M5
	KG125 – KG315	105	66	45	60	16	10	M10

* 2 kits are required for KG80 – KG100



www.krausnaimer.com

© Kraus & Naimer, 05/2025