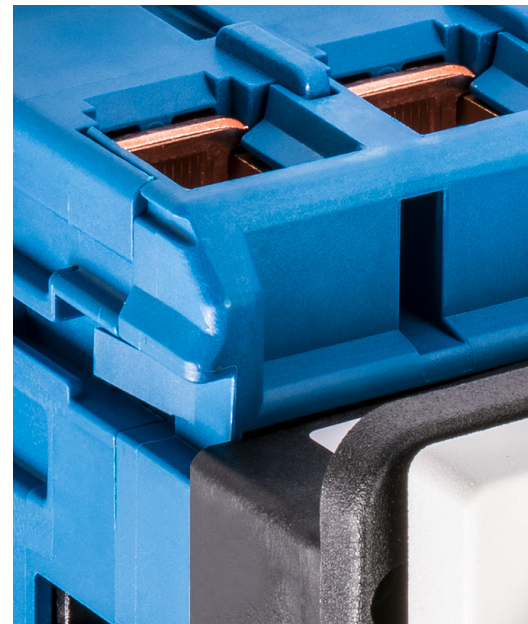
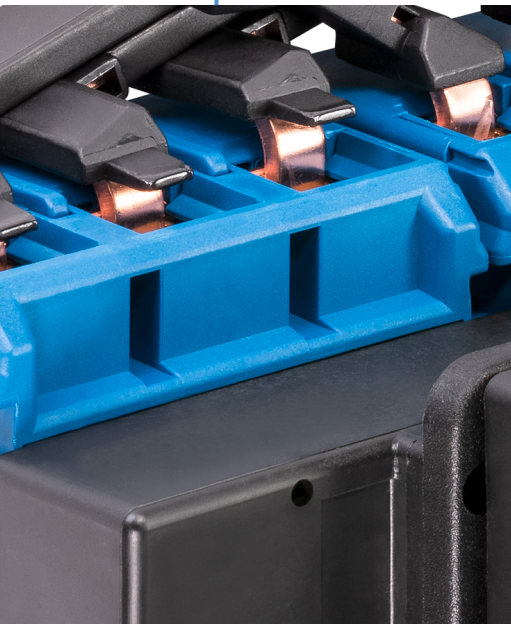


Manual Transfer Switch



Standard-compliant switching with Kraus & Naimer

Kraus & Naimer provides Manual Transfer Switches, ensuring emergency power supply in accordance with relevant standards. Our switches comply with the international standards IEC 60947-6-1 and IEC 60947-3 in the range of low-voltage switchgear.

Emergency power supply

The integration of emergency power supply requires a generator, operated with a Generator Changeover Switch or Manual Transfer Switch Equipment (MTSE).

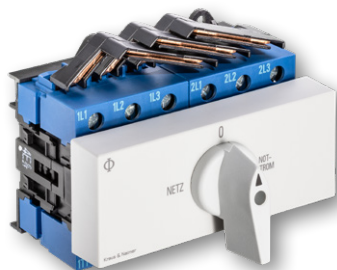
If the power grid is overloaded or damaged due to weather phenomena such as heavy snowfall and storms or if the energy requirements imposed on the power grid are too high, power supply might fail. In such a case, an adequate emergency power supply for your home or your company provides an additional measure to bridge a potential power failure for a certain amount of time.

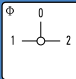
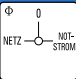
The IEC 60947-6-1 standard defines all requirements regarding the design and testing procedures of Manual Transfer Switch Equipment (MTSE) to enable a safe and reliable operation between two power supplies.

DESIGNS

DIN rail mounting

IP20



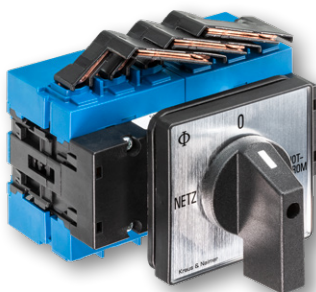
I_u/I_{th}		Name	Art. no.		Name	Art. no.
--------------	--	------	----------	---	------	----------

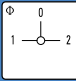
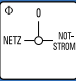
3-pole	25 A	KG20A.T903.VE2	70017919	KG20A.T903.VE2.F437	70051999
	32 A	KG32A.T903.VE2	70018147	KG32A.T903.VE2.F437	70019595
	40 A	KA40B.T903.VE2	70038129	KA40B.T903.VE2.F437	70048421
	63 A	KA63B.T903.VE2	70035167	KA63B.T903.VE2.F437	70048423
	80 A	KG80.T903.VE2	70018453	KG80.T903.VE2.F437	70052049
	100 A	KG100.T903.VE2	70017630	KG100.T903.VE2.F437	70052051
	125 A	KG125.T903.VE2	70058233	KG125.T903.VE2.F437	70058234
	160 A	KG160.T903.VE2	70032977	KG160.T903.VE2.F437	70058232

4-pole	25 A	KG20A.T904.VE2	70010222	KG20A.T904.VE2.F437	70051790
	32 A	KG32A.T904.VE2	70018150	KG32A.T904.VE2.F437	70052044
	40 A	KA40B.T904.VE2	70036433	KA40B.T904.VE2.F437	70048425
	63 A	KA63B.T904.VE2	70048395	KA63B.T904.VE2.F437	70048427
	80 A	KG80.T904.VE2	70011630	KG80.T904.VE2.F437	70051967
	100 A	KG100.T904.VE2	70011037	KG100.T904.VE2.F437	70052041
	125 A	KG125.T904.VE2	70017720	KG125.T904.VE2.F437	70024912
	160 A	KG160.T904.VE2	70032016	KG160.T904.VE2.F437	70058231

Front-panel mounting

IP66/67



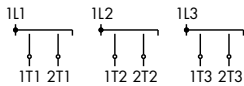
I_u/I_{th}		Name	Art. no.		Name	Art. no.
--------------	--	------	----------	---	------	----------

3-pole	25 A	KG20A.T903.E	70017917	KG20A.T903.E.F437	70051992
		KG20B.T903.E	70017977	KG20B.T903.E.F437	70058235
	32 A	KG32A.T903.E	70018145	KG32A.T903.E.F43	70051998
		KG32B.T903.E	70018201	KG32B.T903.E.F437	70058237
	40 A	KA40B.T903.E	70034217	KA40B.T903.E.F437	70048404
	63 A	KA63B.T903.E	70035184	KA63B.T903.E.F437	70048406
	80 A	KG80.T903.E	70018451	KG80.T903.E.F437	70052057
	100 A	KG100.T903.E	70017628	KG100.T903.E.F437	70051788
	125 A	KG125.T903.E	70017716	KG125.T903.E.F437	70058239
	160 A	KG160.T903.E	70017780	KG160.T903.E.F437	70058240

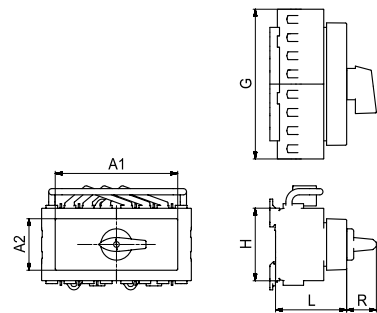
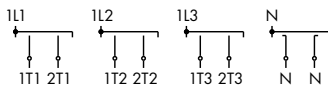
4-pole	25 A	KG20A.T904.E	70034713	KG20A.T904.E.F437	70051972
		KG20B.T904.E	70011142	KG20B.T904.E.F437	70023814
	32 A	KG32A.T904.E	70018148	KG32A.T904.E.F437	70052054
		KG32B.T904.E	70018203	KG32B.T904.E.F437	70034062
	40 A	KA40B.T904.E	70036427	KA40B.T904.E.F437	70048408
	63 A	KA63B.T904.E	70048392	KA63B.T904.E.F437	70048410
	80 A	KG80.T904.E	70018454	KG80.T904.E.F437	70051870
	100 A	KG100.T904.E	70017631	KG100.T904.E.F437	70052063
	125 A	KG125.T904.E	70017718	KG125.T904.E.F437	70029970
	160 A	KG160.T904.E	70017782	KG160.T904.E.F437	70024146

Dimensions in mm

3-pole

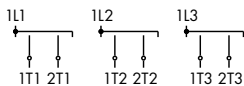


4-pole

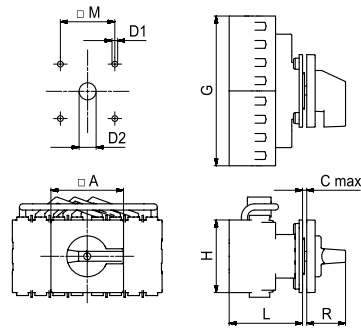
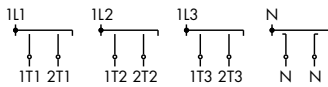


Switch Type	A1	A2	G 3p	G 4p	H	L	R
KG20A, KG32A	43,7	45,4	84	111	54	64	26
KA40B, KA63B	52,4	45,5	100	132	64	68,6	26
KG80, KG100	70	45	140	184	80	76,2	34
KG125, KG160	112	45	224	300	108	101,5	43

3-pole



4-pole

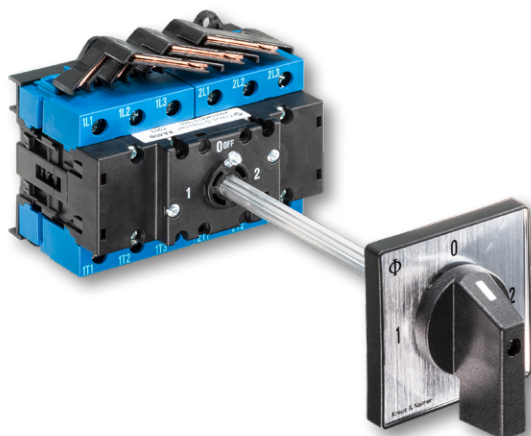



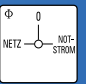
Switch Type	A	C max	G 3p	G 4p	L	H	R	M	D1	D2
KG20A, KG32A	48	4	84	111	61,3	54	29,1	36	5	10
KG20B, KG32B	64	4	84	111	61,3	54	29,1	36	5	10
KA40B, KA63B	64	4	100	132	64,7	64	34,2	48	5	10
KG80, KG100	64	4	140	184	81,8	80	34,2	48	5	10
KG125, KG160	88	5,5	224	300	98	108	43,4	68	6	13

DESIGNS

Base mounting with shaft extension without door clutch¹

IP40



I_u/I_{th}		Name	Art. no.		Art. no.
--------------	--	------	----------	---	----------

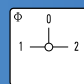

3-pole	25 A	KG20B.T903/57.VE	70034684	KG20B.T903/D-A066.VE	70034694
	32 A	KG32B.T903/57.VE	70034685	KG32B.T903/D-A025.VE	70034695
	40 A	KA40B.T903/57.VE	70035154	KA40B.T903.VE.DE21	70057909
	63 A	KA63B.T903/57.VE	70035122	KA63B.T903.VE.DE21	70057910
	80 A	KG80.T903/57.VE	70034686	KG80.T903/D-W009.VE	70034698
	100 A	KG100.T903/57.VE	70034687	KG100.T903/D-A062.VE	70034699
	125 A	KG105.T903/57.VE	70034688	KG105.T903/D-A005.VE	70034700
	160 A	KG160.T903/57.VE	70034689	KG160.T903/D-A058.VE	70034701

4-pole	25 A	KG20B.T904/57.VE	70034690	KG20B.T904/D-A040.VE	70034702
	32 A	KG32B.T904/57.VE	70034691	KG32B.T904/D-A083.VE	70034703
	40 A	KA40B.T904/57.VE	70056189	KA40B.T904.VE.DE21	70057903
	63 A	KA63B.T904/57.VE	70056190	KA63B.T904.VE.DE23	70057905
	80 A	KG80.T904/57.VE	70027274	KG80.T904/D-A077.VE	70034706
	100 A	KG100.T904/57.VE	70034692	KG100.T904/D-A101.VE	70034707
	125 A	KG105.T904/57.VE	70034693	KG105.T904/D-A011.VE	70034708
	160 A	KG160.T904/57.VE	70022113	KG160.T904/D-A096.VE	70034709

Surface mounting³

IP66/67



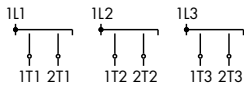
I_u/I_{th}		Name	Art. no.		Art. no.
--------------	--	------	----------	---	----------

3-pole	25 A	KG20B.T903.KL10	70034730	KG20B.T903.KL10.F437	70052040
	32 A	KG32B.T903.KL10	70034731	KG32B.T903.KL10.F437	70051965
	40 A	KA40B.T903.KL70	70048397	KA40B.T903.KL70.F437	70048429
	63 A	KA63B.T903.KL70	70048399	KA63B.T903.KL70.F437	70048431

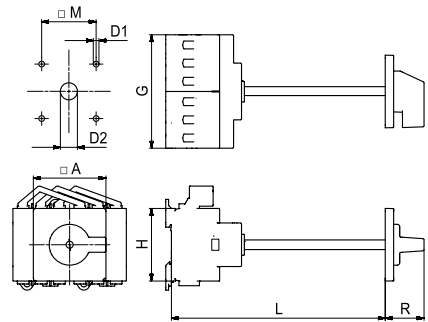
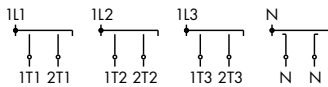
4-pole	25 A	KG20B.T904.KL10	70034733	KG20B.T904.KL10.F437	70051982
	32 A	KG32B.T904.KL10	70034734	KG32B.T904.KL10.F437	70051994
	40 A	KA40B.T904.KL70	70048401	KA40B.T904.KL70.F437	70048433
	63 A	KA63B.T904.KL70	70024774	KA63B.T904.KL70.F437	70048435

Dimensions in mm

3-pole



4-pole



3-pole

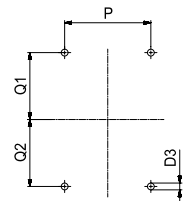
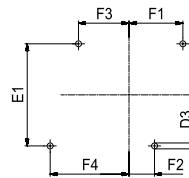
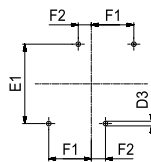
4-pole

3-/4-pole

Mounting plate KG20B-KG100

KG20B-KG100

KG125-KG160

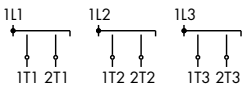


Switch Type	A	G (3pol)	G (4pol)	L	H	R	M	D1	D2	D3	E1	F1	F2	F3	F4	P	Q1	Q2
KG20B, KG32B	64	84	111	190	54	29,1	48	5	10-15	4,1	60	32	10	23,5	45,5	-	-	-
KA40B	64	100	132	190	64	34,2	48	5	10-15	4,1	70	37,5	12,5	28,5	53,5	-	-	-
KA63B	64	100	132	330	64	34,2	48	5	10-15	4,1	70	37,5	12,5	28,5	53,5	-	-	-
KG80	64	140	184	380	80	34,2	48	5	10-15	5,2	90	47,5	22,5	44,5	69,5	-	-	-
KG100	64	140	184	450	80	34,2	48	5	10-15	5,2	90	47,5	22,5	44,5	69,5	-	-	-
KG125, KG160 ²	88	224	300	450	108	43,4	68	6	13-17	6	-	-	-	-	-	76	59-61	59-61

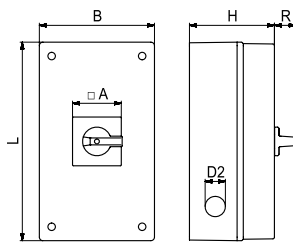
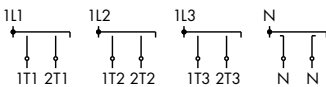
¹ shaft will be conducted directly through the cover. On request, door clutch as an optional extra, we recommend M700 (Main catalog page 79).

² not for DIN rail

3-pole

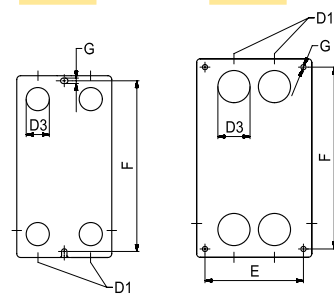


4-pole



3-pole

4-pole



Switch Type	Mounting	A	B	D1	D2	D3	E	F	G	H	L	R
3p KG20B, KG32B	KL10	62	100	M25	M25	M25	-	177	5,6	91,2	190	28
4p KG20B, KG32B	KL10	62	145	M25/40	M25	M40	124	229	6,5	107,4	250	28
KA40B, KA63B	KL70	62	145	M25/40	M25	M40	124	229	6,5	107,4	250	28

³ Enclosure without Cover interlock



www.krausnaimer.com

© Kraus & Naimer, April 2024