

Compact and safe for rough environments



Maintenance switches in stainless steel enclosures by Kraus & Naimer

The portfolio for areas of application in rough environments has been expanded with the maintenance switches in stainless steel enclosures. The product line is ideal for use in the chemical industry, food production or building industry. Due to the various, sometimes aggressive dusts, varnishes or solvents, as well as the high demands in the hygiene sector, the components in these application areas are subject to extreme demands. The compact design, protection class

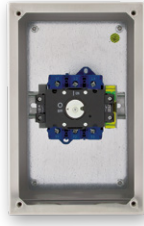
IP66 and impact resistance IK08 are ideal for installation in tight spaces and under adverse environmental influences.



As standard, entries for M20, M25 or M40 screw connections are provided in each enclosure. The right mounting accessories enable quick and cost-saving installation.

VERSIONS

Stainless steel enclosures for rough environments

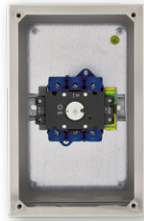
Stainless steel enclosures, 3 pole + 1 NO/NC, IP 66





Rating AC-23B (A)	Thermal Current I_{th}/I_{th}	 Article number Material name	 Article number Material name
3 x 400 V			
5,5 kW	20 A	-	70027145 KG10.T203/NLB512.IKN
7,5 kW	25 A	70020272 KG20.T103/NLB522.IKN	70020262 KG20.T203/NLB512.IKN
11 kW	32 A	70020257 KG32.T103/NLB522.IKN	70020270 KG32.T203/NLB512.IKN
15 kW	40 A	70020258 KG41.T103/NLB522.IKN	70020274 KG41.T203/NLB512.IKN
22 kW	63 A	70020273 KG64.T103/NLB522.IKN	70020276 KG64.T203/NLB512.IKN
30 kW	80 A	70020271 KG80.T103/NLB522.IKN	70020260 KG80.T203/NLB512.IKN
37 kW	100 A	70019434 KG100.T103/NLB522.IKN	70020266 KG100.T203/NLB512.IKN
45 kW	125 A	70022927 KG125.T103/NL452.IKN	-
55 kW	160 A	70042055 KG160.T103/NL552.IKN	-
75 kW	200 A	70022928 KG210.T103/NL752.IKN	-

Larger enclosures on request.

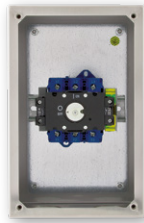
Stainless steel enclosures, 4 pole + 1 NO/NC, IP 66





Rating AC-23B (A)	Thermal Current I_{th}/I_{th}	 Article number Material name	 Article number Material name
3 x 400 V			
7,5 kW	25 A	70020256 KG20.T104/NLB522.IKN	70020267 KG20.T204/NLB512.IKN
11 kW	32 A	70020275 KG32.T104/NLB522.IKN	70020277 KG32.T204/NLB512.IKN
15 kW	40 A	70020263 KG41.T104/NLB522.IKN	70020265 KG41.T204/NLB512.IKN
22 kW	63 A	70020259 KG64.T104/NLB522.IKN	70020268 KG64.T204/NLB512.IKN
30 kW	80 A	70020264 KG80.T104/NLB522.IKN	70020269 KG80.T204/NLB512.IKN
37 kW	100 A	70020254 KG100.T104/NLB522.IKN	70020261 KG100.T204/NLB512.IKN

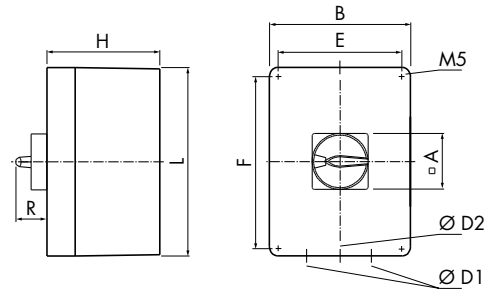
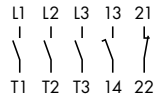
Larger enclosures on request.

Stainless steel enclosures, 6 pole + 1 NO/NC, IP 66



Rating AC-23B (A)	Thermal Current I_{th}/I_{th}	 Article number Material name	 Article number Material name
3 x 400 V			
5,5 kW	20 A	-	70033800 KG10.T206/NLB512.IKN
22 kW	63 A	70034968 KG64B.T106/NLB522.IKN	70034969 KG64B.T206/NLB512.IKN

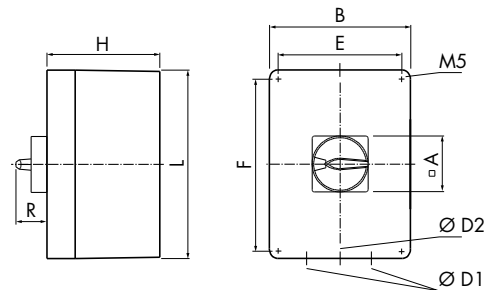
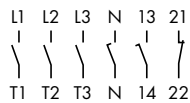
3 pole + 1NO/1NC



Maximal number of padlocks		
Padlock device	Shackle-Ø	Number of locks
	9	3

	A	B	D1	D2	E	F	H	K	L	R
KG20, KG32	64	100	2 x 25	1 x 20	0	130	110	7,0	160	40,1
KG41, KG64	64	100	2 x 25	1 x 20	0	170	110	7,0	200	40,1
KG80, KG100	64	160	2 x 40	1 x 20	110	200	120	7,0	250	40,1
KG125, KG160	88	400	-	-	350	350	200	8,0	400	49,3
KG250	88	400	-	-	350	350	200	8,0	400	49,3

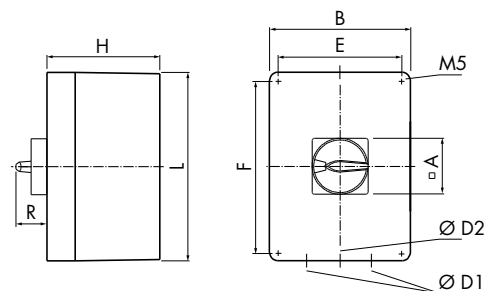
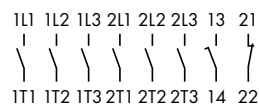
4 pole + 1NO/1NC



Maximal number of padlocks		
Padlock device	Shackle-Ø	Number of locks
	9	3

	A	B	D1	D2	E	F	H	K	L	R
KG20, KG32	64	100	2 x 25	1 x 20	0	130	110	7,0	160	40,1
KG41, KG64	64	100	2 x 25	1 x 20	0	170	110	7,0	200	40,1
KG80, KG100	64	160	2 x 40	1 x 20	110	200	120	7,0	250	40,1

6 pole + 1NO/1NC



Maximal number of padlocks		
Padlock device	Shackle-Ø	Number of locks
	9	3

	A	B	D1	D2	E	F	H	K	L	R
KG10	64	100	2 x 25	1 x 20	0	130	110	7,0	160	40,1
KG64	64	100	2 x 25	1 x 20	0	170	110	7,0	200	40,1

ACCESSORIES

Mounting accessories



Standard



Flat



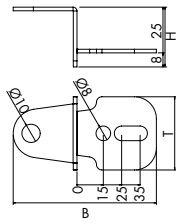
Hygienic

Depending on the respective requirements, different mounting variations are available.

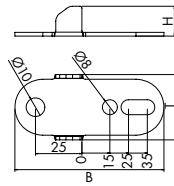
Standard, flat and hygienic stainless steel wall mounting bracket made of AISI 304, brushed surface. M5 screws included in the scope of delivery, mounting screws must be provided by the customer.

Wall mounting bracket

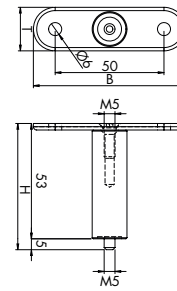
Description	Name	Art. no.
Standard with screws 4 pcs.	AT2.Q4SV.002	5500064
Flat with screws	AT2.Q4SV.009	5500063
with spacer Hygienic for M5 screws. 2 pcs.	AT2.Q4SV.195	5500062



Wall mounting bracket
Standard



Wall mounting bracket
Flat



Wall mounting bracket
Hygienic

Dimensions in mm

Name	Art. no.	Dimensions		
		B	H	T
AT2.Q4SV.002	5500064	78	32	40
AT2.Q4SV.009	5500063	80	16	35
AT2.Q4SV.195	5500062	70	58	20



 Kraus & Naimer

www.krausnaimer.com

© Kraus & Naimer, June 2024