

Outstanding quality for Ex areas



ATEX Maintenance and Safety switch (Zone 21) by Kraus & Naimer

Combustible dusts are produced in various areas of industry such as food and animal feed production. When mixed with the oxygen in the air, these dusts form an explosive atmosphere if they are of sufficient size and minimum density. If this atmosphere ignites, explosions will occur, which can result in severe personal injury and property damage. In order to avoid ignition from sparking when operating a repair switch, these safety requirements must be met.

In our main catalog you will find an overview of our approved ATEX repair switches for zone 21. We offer you 3 and 4 pole switches up to 55 A and 6 pole switches up to 32 A.

Our expert contact persons from the office and field service are available to you with competent advice on everything to do with Kraus & Naimer switchgear.

VERSIONS

Maintenance and Safety switch acc. to EC ATEX-Directive 94/9/EG equipment group II, Category 2, Zone 21, Indication of field D Mechanical impact resistance 7J

Zone 21, 3 pole + 1 NO/NC, IP 66



EMC Model

Rating AC-23B (A)	Thermal Current I_{th}	Order number Article name
With auxiliary contacts (1 NO, 1 NC)		
7,5 kW	25 A	70027276 KG20.T103/NL-EXBA.KNBOX
11 kW	32 A	70022644 KG32.T103/NL-EXBA.KNBOX
15 kW	40 A	70023925 KG41.T103/NL-EXBA.KNBOX
20 kW	55 A	70023931 KG64.T103/NL-EXBA.KNBOX
EMC-Model with auxiliary contacts (1 NO, 1 NC)		
7,5 kW	25 A	70022632 KG20.T103/NL-EXBC*KNBOX
11 kW	32 A	70022932 KG32.T103/NL-EXBC*KNBOX
15 kW	40 A	70023926 KG41.T103/NL-EXBC*KNBOX
20 kW	55 A	70023932 KG64.T103/NL-EXBC*KNBOX

Order number Article name
70022472 KG20.T203/NL-EXRA.KNBOX
70023921 KG32.T203/NL-EXRA.KNBOX
70023928 KG41.T203/NL-EXRA.KNBOX
70023934 KG64.T203/NL-EXRA.KNBOX
70022638 KG20.T203/NL-EXRC*KNBOX
70023922 KG32.T203/NL-EXRC*KNBOX
70023929 KG41.T203/NL-EXRC*KNBOX
70022290 KG64.T203/NL-EXRC*KNBOX

KG20-KG32: 2 x M25 ATEX cable glands and 1 dummy plug M20 included.

KG41-KG64: 2 x M25 ATEX cable glands, 2 x M32/M25 adaptors and 1 dummy plug M20 included.

Note for EMC model:

Maintenance Switches for EMC-compliant connection of FU-regulated drives use shield clips.

These clips are used to continue the cable shield circuit through the enclosure. The configuration of the Maintenance Switch between FU and motor allows the use as Disconnector up to 400 Hz and as Load Switch at frequencies from 40 Hz to 100 Hz. Each Maintenance Switch has as standard 2 auxiliary contacts, 1 NC and 1 NO. Via the NO (20 ms leading) the FU can be switched off before the main contacts of the switch open.

For the rating of the switch please note that the motor may have approx. 10 % higher charging rate due to the higher loss in FU-operation e.g. a motor with 7,5 kW rating the motor current has to be determined with 16,7 A instead of 15,2 A.w

Zone 21, 4 pole + 1 NO/NC, IP 66



Rating AC-23B (A)	Thermal Current I_{th}	Order number Article name
With auxiliary contacts (1 NO, 1 NC)		
7,5 kW	25 A	70022633 KG20.T104/NL-EXBA.KNBOX
11 kW	32 A	70022933 KG32.T104/NL-EXBA.KNBOX
15 kW	40 A	70023927 KG41.T104/NL-EXBA.KNBOX
20 kW	55 A	70023933 KG64.T104/NL-EXBA.KNBOX

Order number Article name
70022639 KG20.T204/NL-EXRA.KNBOX
70023923 KG32.T204/NL-EXRA.KNBOX
70023930 KG41.T204/NL-EXRA.KNBOX
70023935 KG64.T204/NL-EXRA.KNBOX

KG20-KG32: 2 x M25 ATEX cable glands and 1 dummy plug M20 included.

KG41-KG64: 2 x M25 ATEX cable glands, 2 x M32/M25 adaptors and 1 dummy plug M20 included.

Zone 21, 6 pole + 1 NO/NC, IP 66

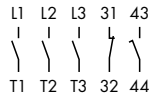


Rating AC-23B (A)	Thermal Current I_{th}	Order number Article name
With auxiliary contacts (1 NO, 1 NC)		
7,5 kW	25 A	70022634 KG20.T106/NL-EXBA.KNBOX
11 kW	32 A	70023920 KG32.T106/NL-EXBA.KNBOX

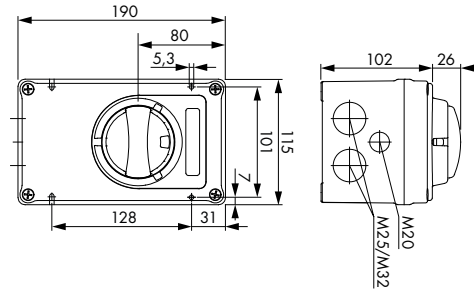
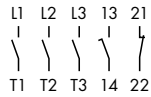
Order number Article name
70022640 KG20.T206/NL-EXRA.KNBOX
70023924 KG32.T206/NL-EXRA.KNBOX

2 x M32 ATEX cable glands and 1 dummy plug M20 included.

3 pole + 1NO/1NC



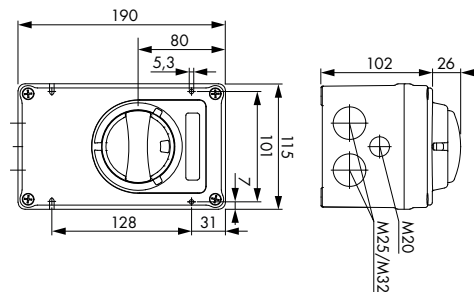
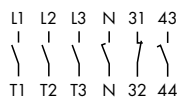
3 pole + 1NO/1NC EMC



Maximal number of padlocks		
Padlock device	Shackle-Ø	Number of locks
	6	3

Cable-Ø shield		
Shield clamp	Type	Ø min-max
	KG20-KG64	12-16

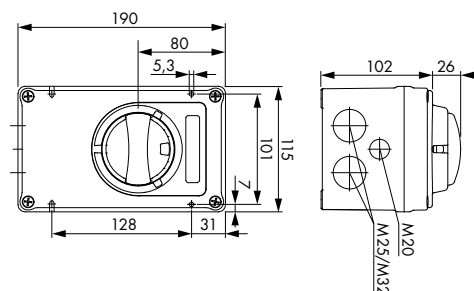
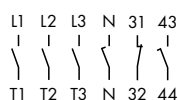
4 pole + 1NO/1NC



Maximal number of padlocks		
Padlock device	Shackle-Ø	Number of locks
	6	3

Cable-Ø shield		
Shield clamp	Type	Ø min-max
	KG20-KG64	12-16

6 pole + 1NO/1NC



Maximal number of padlocks		
Padlock device	Shackle-Ø	Number of locks
	6	3



 Kraus & Naimer

www.krausnaimer.com

© Kraus & Naimer, November 2022